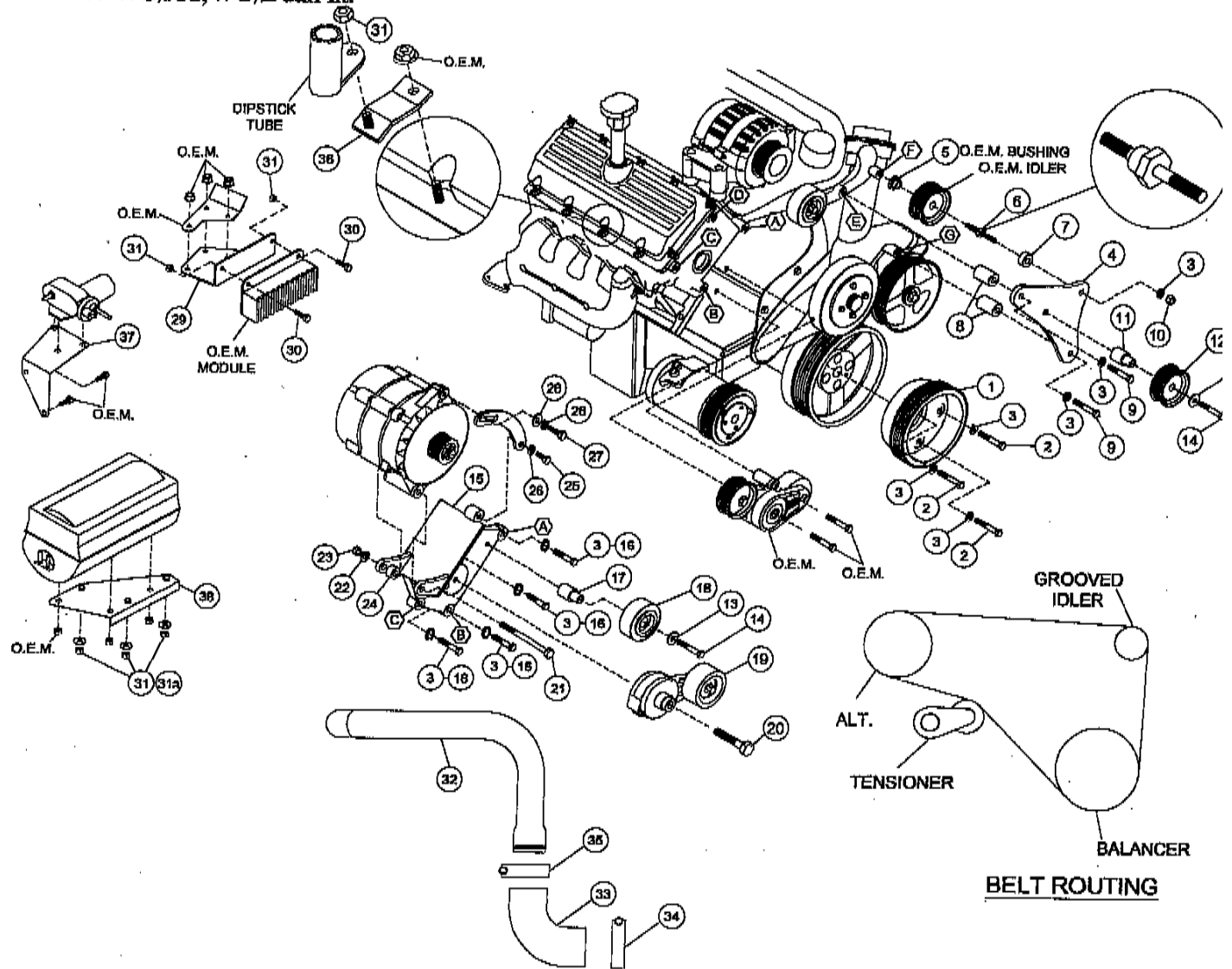


FMK 68 L3S-8

2003 Ford Truck F-250-550

6.0 Diesel

W-WO/AC, WO/Dual Alt.



PARTS LIST

- | | | |
|--------------------------|---------------------------|---|
| 1. FPC 688 (1) | 16. 10mm x 40mm 10.9 (4) | 30. 1/4 x 3/4 NC (2) |
| 2. 10mm x 30mm 10.9 (3) | 17. FMB 685 (1) | 31. 1/4 NC Nut (6) |
| 3. 10mm LW (10) | 18. TIPCD (1) | 31a. 1/4 FW (3) |
| 4. FMB 680 (1) | 19. 8920236 Tensioner (1) | 32. 2.5-8590-3.0ST 2 1/2" Steel Elbow (|
| 5. O.E.M. Washer (1) | 20. 12mm x 80mm 10.9 (1) | 33. TP 140 Rubber Elbow (1) |
| 6. 1080ST (1) | 21. 7/16 x 5 NC (1) | 34. 250-87 Hose Clamp (1) |
| 7. FMB 682 (1) | 22. 7/16 LW (1) | 35. 250-84 Hose Clamp (1) |
| 8. FMB 683 (2) | 23. 7/16 Nut (1) | 36. FMB 688 (1) |
| 9. 10mm x 65mm 10.9 (2) | 24. SP88-0500 Spacer (1) | 37. FMB 689 (1) |
| 10. 10mm Nut (1) | 25. 3/8 x 1 NC (1) | 38. FMB 6810 (1) |
| 11. FMB 684 (1) | 26. 3/8 LW (2) | 39. Alternator (Sold Separately) |
| 12. GPCD8 (1) | 27. 3/8 x 1-1/4 NC (1) | 40. 5080700 Dayco (1) (Pump drive bel |
| 13. 12mm FW (2) | 28. 3/8 FW | 41. K81325 Dayco (1) (Main drive belt) |
| 14. 12mm x 65mm 10.9 (2) | 29. FMB 686 (1) | |
| 15. FMP 68 L3S (1) | | |